



Online digital asset management library,  
designed exclusively for the Automotive Aftermarket

## Key Benefits

- Say goodbye to digital asset chaos
- Store, manage, re-size and share your images with ease
- Increase efficiency and accuracy through system integration
- Reduce resource costs and task duplication
- Greater control and management of branding
- Sophisticated reporting and analytics at your command
- Distribute assets compliant to pre-set criteria and multiple Aftermarket Data Standards
- Access from multiple locations anywhere in the world 24/7
- Control and share assets between departments, brands or organisations
- Three options available to match your business needs

Asset™ is the online repository for all your digital assets and a component of ONCE®, the complete automotive cataloguing and fulfilment solution. Upload a high resolution, master asset once, and Asset makes it possible for you to control, customise, convert and re-use that asset again and again.

Integrate Asset™ with other ONCE® components and you have a powerful product library at your fingertips, that can be managed and maintained with ease.

Maintaining an up-to-date library of digital assets is essential for business. Asset gives you the capability to do this accurately and efficiently. For example, integrate with ONCE®'s Xchecker catalogue management system and you can automate complex formatting, naming and distribution tasks. Whilst Asset and Catalogue will build you a print ready catalogue, cover-to-cover at the touch of a button.

## Key Functionality



**Allocate** digital assets to one, or multiple part numbers



**Bulk upload or download** images, files and data



**Create, manage and re-size** assets with their relevant product and branding information



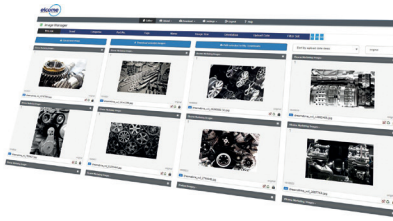
**Output** assets with correct criteria, in whatever format, size or resolution



**Integrate** with Xchecker for automatic data feeds and updates



A suite of reports to help you **manage, edit** and **enhance** your digital assets



## The Comprehensive Library holds:

- Product Images
- Marketing Images
- 360 Degree Images
- Fitting Instruction Sheets
- Packaging Photos
- Technical Drawings
- Logos, Icons and Symbols
- Watermarks (inc. composite)

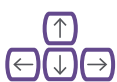
Choose the Asset option that is right for the needs and requirements of your business.

Feature	Asset LITE	Asset VITAL	Asset PRO
Storage space	10GB	25GB	35GB
Maximum images	20,000	50,000	70,000
Maximum Users	1 x Xchecker	5	15
Export Sets	TecDoc, 2 x MAM	5	30
Max upload files	5 at once	100	100
Max downloads	10GB per month	25GB per month	35GB per month
Data Excel upload	No	Yes	Yes
Watermarking	No	1 Brand	6 Brands
360 degree images	No	No	Yes
Custom sections	No	No	POA

## Reporting Features

- Integrates with Xchecker to easily identify parts without an allocated image
- Record what has been uploaded and when
- See what has been downloaded and when

## Plus



Full admin control, to create user and permission groups



Free introductory training for all administrators



System can be configured, customised and branded for your business



Dedicated Elcome Account Manager, plus complete User Documentation and Technical Help Line for support



Accessible 24/7 from anywhere in the world

## Asset Management Features

- Fast and easy search facility, with multiple filter and keyword options
- User friendly image gallery display
- Easy management of the relationship between images and part numbers
- Allocate **multiple part numbers** to an image, or multiple images to a part
- Easy **bulk upload and download** of images and data
- Edit and customise** image resolution (DPI), proportions, re-size or scale by percentage
- Flexible **branding control** using **watermarks** for single, multiple and linked parts
- Manage and edit **meta data fields**
- Export with pre-set criteria for multiple **Aftermarket Data Standards**
- Export in colour or grayscale**
- Supports formats **JPG, PNG, BMP, GIF, CR2, JPEG, TIF, TIFF, AI, EPS, EPS2, EPS3, PS, JPE, PSD & PDF's**