

## Xchecker™ Release Bulletin: 21/11/2018 (3 pages)

# Part Status Bulk Export/Import

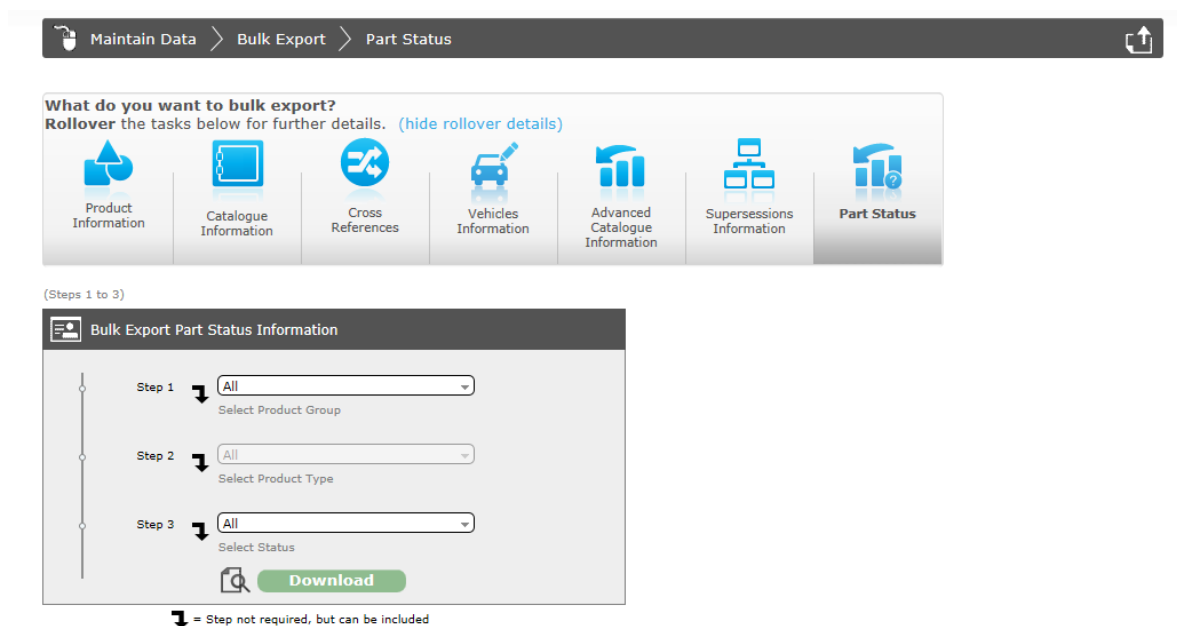
## Overview.

This is a new time-saving function, for Xchecker users with admin or write access, which **enables bulk export and import of your Part Statuses** in a report format, so they may be amended as a group.

## 1. Generating the Report

### Maintain Data> Bulk Export> Part Status

- Follow the 3-step process to make your selection, then click to **Download**. You can choose to download ALL, or select product group, product type and part status.




Maintain Data > Bulk Export > Part Status


What do you want to bulk export?  
Rollover the tasks below for further details. (hide rollover details)


Product Information Catalogue Information Cross References Vehicles Information Advanced Catalogue Information Supersessions Information **Part Status**


(Steps 1 to 3)


**Bulk Export Part Status Information**

Step 1  All  
Select Product Group

Step 2  All  
Select Product Type

Step 3  All  
Select Status

 **Download**

 = Step not required, but can be included

- Please note:** Once you've selected and clicked the **Download button**, the part statuses for the selections you've made will be locked out for editing within the Product Information screen and Bulk Exports.

- You will then receive an email advising you to go to the **Clients Report** page where your new Part Status export will be ready for download.

## 2. The Part Status Report

- The report itself has only **1 column** that can be amended, which is labelled **P:Status** (see following page).
- The exported spreadsheet makes it easier to change the status on many parts at one time.
- For example; you can now download all parts with a status of 'New to range' change the status to 'Yes' and import back into Xchecker.

ReadOnly P:PartNo	ReadOnly P:Description	ReadOnly P:Category	ReadOnly P:ProductType	Description	ReadOnly P:ProductType	ReadOnly ProdfileID	ReadOnly ProductTypeeld	List P:Status
011	Brake Disc	Braking	Brake disc		BDIS	8946	10	Yes
123	Brake Disc	Braking	Brake disc		BDIS	9638	10	New to range
12345	Brake Disc	Braking	Brake disc		BDIS	9691	10	New to range
123456	Brake Disc	Braking	Brake disc		BDIS	9690	10	New to range
1235565	Brake Disc	Braking	Brake disc		BDIS	8957	10	In development
1274	Brake Disc	Braking	Brake disc		BDIS	8940	10	Superseded
146585	Brake Disc	Braking	Brake disc		BDIS	9692	10	New to range
333	Brake Disc	Braking	Brake pad set, disc brake		BPAD	9009	9	Superseded
456123	Brake Disc	Braking	Brake pad set, disc brake		BPAD	9008	9	New to range
54636	Brake Disc	Braking	Brake disc		BDIS	8944	10	Superseded
5588756	Brake Disc	Braking	Brake pad set, disc brake		BPAD	8983	9	Superseded
ABC123	Brake Disc	Braking	Brake disc		BDIS	8951	10	Superseded
abc123456	Brake Disc	Braking	Brake disc		BDIS	8952	10	New to range

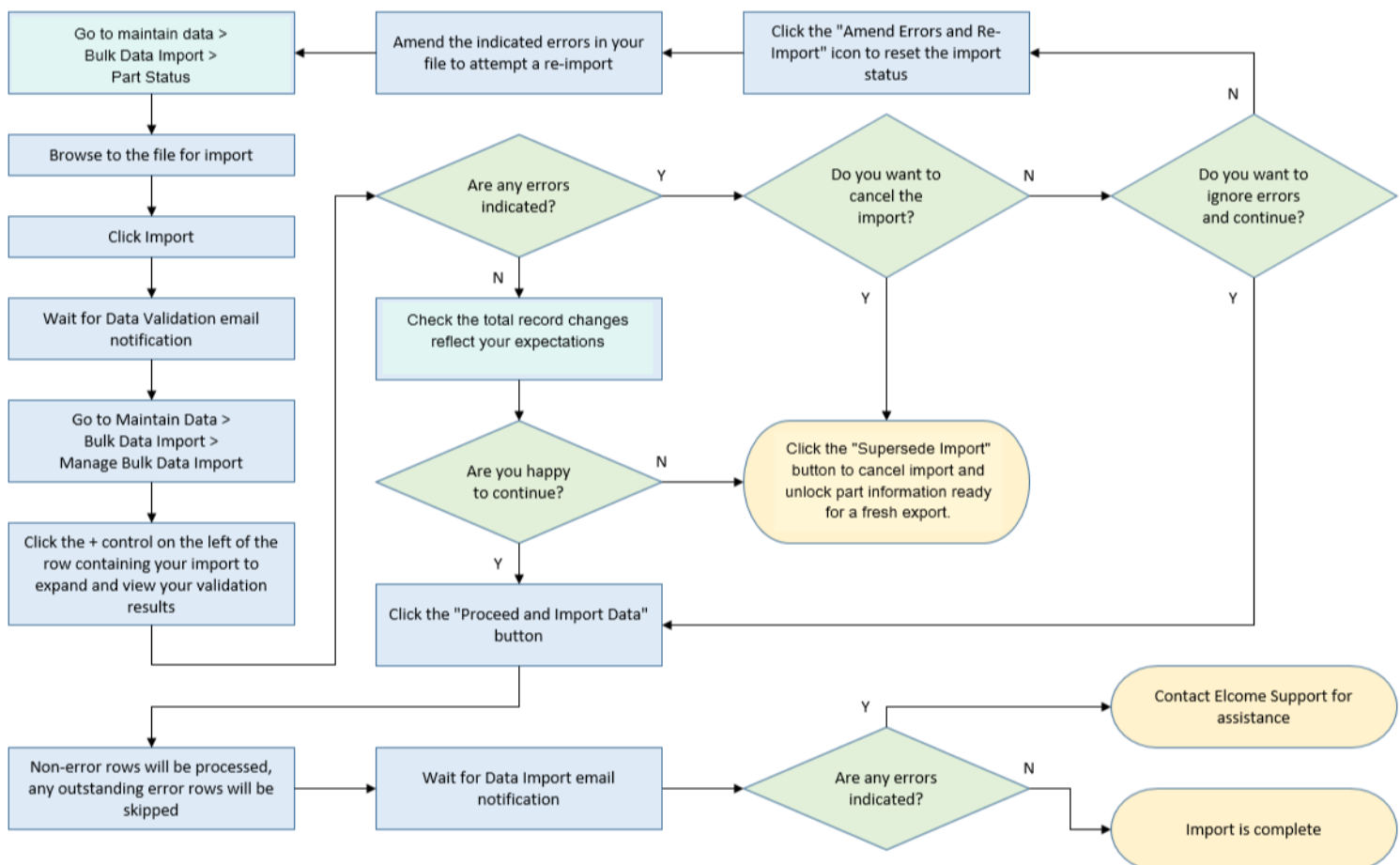
## 3. Track/View the progress of a Report

### Maintain Data> Bulk Import> <Manage Bulk Data Import

- In this screen, you can **view the progress** of an Export and **supersede** any part status spreadsheet, which will unlock the choices you've made.
- This screen is also used for processing the spreadsheet after import.

## 4. Importing the amended Part Status Report back into Xchecker

- Once you have completed the amends you want to make, **make sure you save the changes.**
- You are now ready to import the file back into **Xchecker**. As there are number of stages that you need to go through, we have created a flow diagram to follow:



\*\*\*END\*\*\*